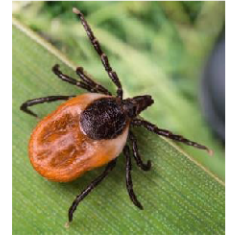




Lyme Disease Awareness

Sponsored by The Town of Guilderland
Tuesday, June 10, 6-8 p.m.
Guilderland Town Hall
5209 Western Turnpike, Guilderland, NY 12084



The Town of Guilderland is pleased to sponsor a program on Lyme Disease Awareness. The program will feature two engaging and informative presentations by top experts in the field. Following their presentations, they will be available to answer your questions. After a welcome by Town Supervisor Peter G. Barber, State Senator Pat Fahy and Assemblymember Gabriella Romero will provide updates on the State's efforts to combat Lyme disease. Following are our keynote speakers for the event.



Holly Ahern is an award-winning professor of microbiology at the State University of New York at Adirondack, where she teaches courses in biology and microbiology. The title of her talk for this program is "Tiny Bug, Big Problem." As a result of her family's personal experience with Lyme disease, Ahern provides education on tick-borne diseases and advocates on behalf of the Lyme disease patient community to improve healthcare options and improved access to care. She currently is the Scientific Advisor for the Focus on Lyme Foundation and is co-founder and Chief Scientific Officer of Aces Diagnostics, a company created in 2023

to make clinically accurate diagnostic tests and therapeutics broadly available to Lyme disease patients. As a scientist and advocate, she was appointed to serve on state and federal advisory groups, including the HHS Tick Borne Disease Working Group and the NYS Tick Borne Disease Working Group. She remains actively involved in NYS and federal legislative initiatives to improve access to care for Lyme disease patients and people with other chronic illnesses.

Saravanan Thangamani, PhD, is the Principal Investigator at the Thangamani Lab, SUNY Upstate Medical University. He will discuss the work of his lab and the importance of testing ticks. Dr. Thangamani is an expert in vector-borne diseases, specifically tick-borne and mosquito-borne diseases caused by pathogens such as the Lyme disease agent, *Borrelia burgdorferi*, Powassan virus, Heartland virus, Chikungunya virus, West Nile virus and Zika virus. His research attempts to understand, among other things, the environmental factors contributing to the emergence and re-emergence of vector-borne diseases in the United States and the effect of co-infections on the clinical outcome of Lyme disease. The public can send ticks found attached to themselves, their children or pets to the Thangamani Lab and, for a small fee, have the tick tested for any potential pathogens it may be carrying. If you find a tick attached, sending the tick in for testing can help you and your provider determine whether or not to treat the tick bite. It's a small price to pay for peace of mind! For more information on how to have a tick tested, please visit nyticks.org.



The program will be livestreamed on the Town's [website](http://www.guilderland.org), Verizon channel 34, and Spectrum channel 1303. Within days of the program, an indexed recording, with a link will also be posted online.